

# Linjeprojektor LED Golvmarkering

## VIRTUAL LINE MARKING

Brochure 2024 - 2025



[www.bisafe.se](http://www.bisafe.se)  
**ALIS Tech Ltd.**  
[www.alis-tech.com](http://www.alis-tech.com)





### Logistics Marking

## Visual Virtual Lines & Pallet Positions

- ✓ **Extended marking lifespan** - no more maintenance and re-marking costs.
- ✓ **Quick and easy navigation** - helps employees with navigation in the operation faster and more efficiently, leading to increased productivity and minimised errors.

## For Easier Traffic Guidance

The most advanced optical system enables the projection of highly visible lines that will impress each audit control even a visit from Top Management.

Unlike category 2 and 3 lasers, LED technology is health safe and does not cause eye damage.

<b>IP cover</b>	65
<b>Compatible optics</b>	55°, 75°, 90°
<b>Power</b>	70W
<b>Line length depending on installation height</b> <small>(projector installation height vs line length)</small>	
<b>55°</b>	1:1 m
<b>75°</b>	1:1.5 m
<b>90°</b>	1:2 m

Installation height: 1-15 m



# 80 %

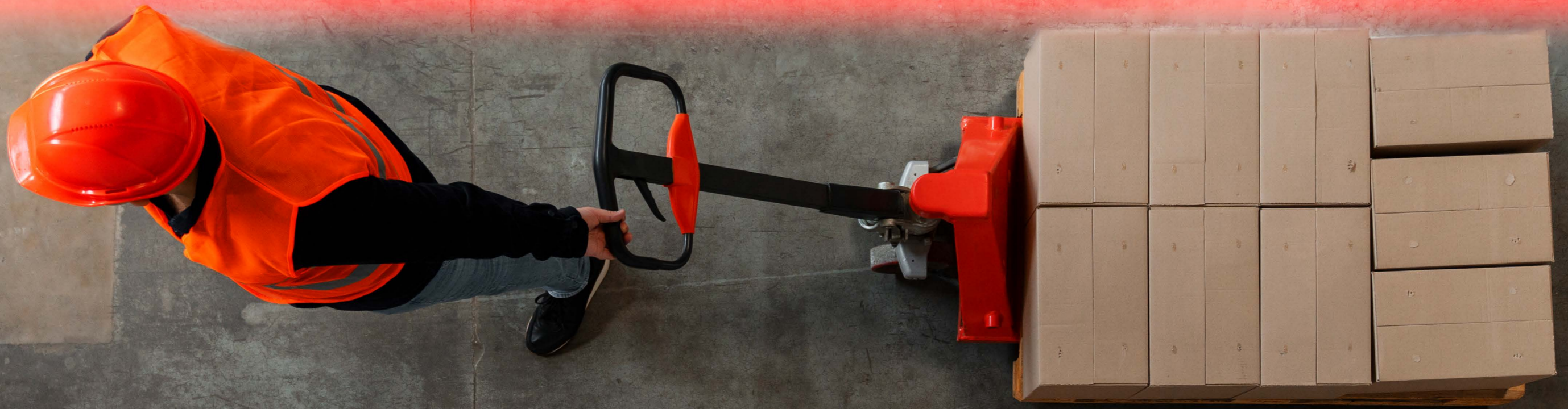
up to **80 %** of all injuries at work are due to the human error

# 20 %

**20 %** of all work injuries are pedestrian vs forklift type

# \$15 million

**\$15 million** fine for fatal accident caused by crane



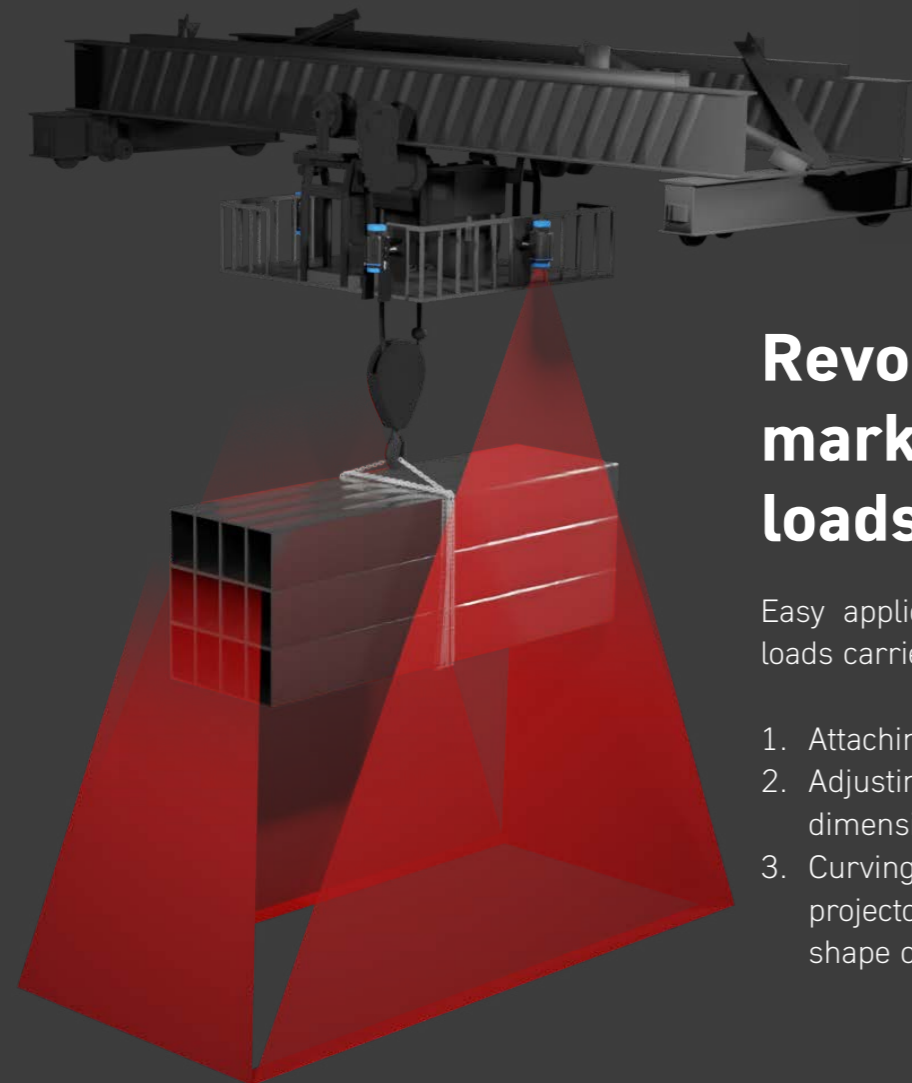
A more sophisticated way of marking

**The next level of workspace  
enlivenment options.**

New class projectors

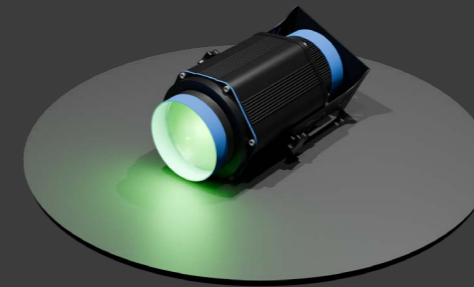
## Designed to withstand the toughest conditions.

- ✓ Thanks to a specially adapted optical system, they maximize the potential of luminous intensity and line length.
- ✓ They compete with conventional marking techniques.



Available in 5 colors

White - Red - Yellow - Blue - Green



## Revolution in the marking of oversized loads

Easy application of virtual marking of heavy loads carried by crane:

1. Attaching the projector to the crane.
2. Adjusting the projection angle to the dimensions of the load.
3. Curving the length of the lines using the projector shields to achieve the desired shape of the final projection.



Trusted By 400+



VOLVO

Mondelēz  
International



HYUNDAI

P&G

SKODA

Nestlé

BISAFE MÄRKNING & INDUSTRIISÄKERHET AB

info@bisafe.se    www.bisafe.se    046 - 705120

ALIS Tech Ltd.



Co-funded by  
the European Union



MINISTRY OF INDUSTRY AND TRADE  
OF THE CZECH REPUBLIC